

▶ BLUE SKIES AHEAD

WHAT IS PERMISSIBLE TRAVEL?

PREPARING FOR THE RETURN OF TRAVEL

As we prepare for business travel to resume, it is pertinent for your company to define what travel they consider essential and permissible. The three factors that should bare the weight in this decision are what your company allows, what your employees agree to, and what the government is allowing.



CORPORATE APPROVAL

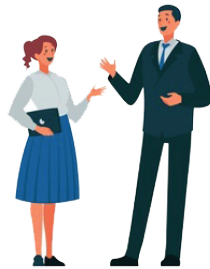
We have defined what travel is essential to business continuity.

Travel is essential to retaining a competitive advantage.

Business obligations cannot be completed via virtual communication.

We have established an internal and external travel approval process.

We have evaluated the risk involved with travel at this time.



TRAVELER READINESS

Employee is willing to travel.

All employee health and safety concerns have been addressed.

Employees are fully equipped with all necessary PPE for their trip.

Travel etiquette and expectations have been clearly communicated to the employee.

Employee is willing to comply with all TSA guidelines.



GOVERNMENT PERMISSION

Country and/or State borders are open.

Entry requirements for domestic or international trip are obtainable.

The necessary travel services are operating (flight/hotel/car).

CDC/WHO has approved travel to/from desired region.

TSA standards and regulations are enforced for all travel.

PERMISSIBLE TRAVEL